

A photograph of a modern industrial building with blue corrugated metal siding and a stone base. The building features large glass windows and a glass entrance. The Alpha logo and company name are prominently displayed on the facade.

**ALPHA**  
BREWING OPERATIONS  
LEADING THE WAY IN CRAFT



**BYO.B.  
BUILD YOUR OWN  
BREWERY**

The Alpha logo, consisting of a stylized alpha symbol followed by the text 'ALPHA BREWING OPERATIONS' and the tagline 'LEADING THE WAY IN CRAFT' below it.

**ALPHA**  
BREWING OPERATIONS  
LEADING THE WAY IN CRAFT

PROFESSIONAL TOOLS FOR PROFESSIONAL BREWERS

**CANNING | BREW HOUSE | CELLAR TANKS | CHILLERS | BOILERS | KEG WASHERS**

FOR ALL SALES ENQUIRIES

+61 3 9487 1150 | [info@fbpropak.com](mailto:info@fbpropak.com) | [fbpropak.com](http://fbpropak.com)

**FB\*PROPAK**

Supplying, installing & engineering breweries, packaging & canning lines since 1968

# BREW HOUSES

The beating heart of your brewing operation is the brew house. A weak, inefficient heart cannot be exerted and doesn't last. A durable and efficient brew house from Alpha ensures your brewery every opportunity to thrive.

Alpha outfits brew house configurations for the simple brewpub to complex production breweries. We offer steam, direct-fire, and electric heating options. Alpha designs for space, process flow, budget expansion.

- SEW Eurodrive motors on mash mixers, lauter rakes and spent grain drop plow
- Heavy duty milled plate false bottom with easy to remove framed section design
- Sanitary stainless-steel process piping with organized valve manifold cluster design
- Heavy duty stainless steel work platform with perforated decking and removable stairs
- Under platform "ground effects" LED lighting (multiple color options)
- LED interior tank lighting
- Stainless steel control cabinet
- Oversized, efficient, plate and frame heat exchangers (single, or dual stage)
- Full stainless-steel SPX washdown brewery application pumps
- Tempered all-glass manways with logo etching available
- Vortex grist hydrator with sight glass
- Platform level sight glass for Vorlauf
- Ground level sight glass for run-off to kettle
- Manometer sight level pressure indicator tubes on lauter tuns and level tube on all vessels
- Integrated and isolated CIP process piping. CIP spray jets under false bottom.
- Slotted rotating CIP spray balls

## OPTIONAL BREW HOUSE COMPONENTS INCLUDE:

- Flow meters • All glass wort grants (automated level control available)
- Stainless steel brewer's sink • Wort sampling stations either floor, or platform level
- Kettle stack slide gate for souring • Condensation U-pipe with cooling water jets
- Wort oxygenation assembly with sight glass (for heat x) • Hop backs
- Full skid mounting of brew house • Pre-plumbed steam piping option

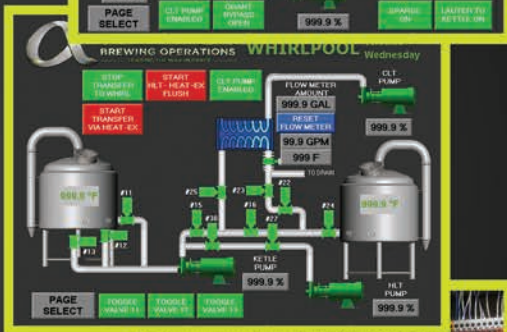


# BREW HOUSE AUTOMATION

Alpha offers a variety of brew house automation packages designed to increase mechanical and chemical efficiencies while facilitating critical product consistency. We create conveniences that give the brewer the ability to step away periodically during a brew to attend to other tasks.

## AUTOMATION FEATURES INCLUDE:

- 12.1" color touch screen with programmable logic controller (PLC)
- Strike and sparge temperature modulation and batch shut-off
- Knock out temperature modulation and batch total
- Wort grant liquid level modulation
- Step-mash sequencing and recipe storage
- Add hops timer with recipe storage and alarm
- One touch commands for vorlauf, sparge, decoction and other transfer processes
- Remote monitoring and control of brew house and cellar tanks from phone, laptop, or tablet
- LED stack lighting shows status indication at a glance
- Air actuated transfer valves
- Timer setting for automatic rakes
- Cellar tank control from the brew house touch screen
- Auger start/stop control
- Micro SD card allows easy program backup and updates



“

"We've purchased from Alpha a little over 2 years ago and have been brewing just over a year and a half. We purchased a 10BBL turnkey solution from Alpha. Since this was our first brewery, we decided to purchase from a single source for the best overall support. Alpha did not disappoint. Their service has been second to none. The quality of the equipment is also outstanding. We continue to brew outstanding beer (even won best in class for IPA at AC Best Festival in NJ). We've grown since we've started and continue to purchase from Alpha."

– **Bob King Lone Eagle Brewing Company**

"Great company with phenomenal staff. We've been nothing short of impressed with the quality of the equipment and the customer service offered on the backend. Purchased a 10bbl 2-vessel BH with 5 brights and 5 fermies. No issues at all. Would gladly recommend and buy from again."

– **Jon Cross Call To Arms Brewing Company**

"After a long search and a visit to Lincoln, we settled on Alpha Brewing Operations, and we have been pleased with the results. They built us a custom (tall and thin) 10 bbl system and a 1 bbl pilot system. We continue to have a great relationship with Matt and the rest of the Alpha Team. Highly recommend!"

– **Tony DeLellis Tattered Flag Brewing Company**

# CELLAR TANKS

Alpha supplies cellar tanks ranging from 1 to 200 barrel capacity. We can custom build to fit virtually any space. Our standards require the highest quality raw stainless steel, excellence in craftsmanship and rigorous testing protocol. You can find thousands of Alpha cellar tanks on 6 continents.



## FERMENTERS

**Black Hops II**  
Queensland, Australia



## BRITE TANKS

**Cinderlands Brewing**  
Pittsburgh, PA



## SERVING TANKS

**Grand Central Brewery**  
St. Petersburg, FL



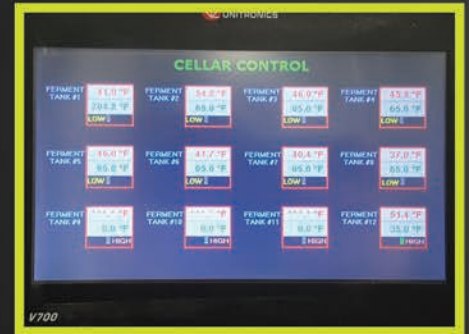
## LAGERING TANKS

**Source Brewing**  
Colts Neck, NJ



## FOEDERS

**Mahalo Brewing**  
Maui, HI



## CELLAR CONTROL SYSTEMS

Alpha Brewing Operations builds temperature control panels for Cellar management. Our control cabinets feature 7" color touch screen. Alpha cellar control systems are expandable to accommodate your growing business.

# GRAIN HANDLING



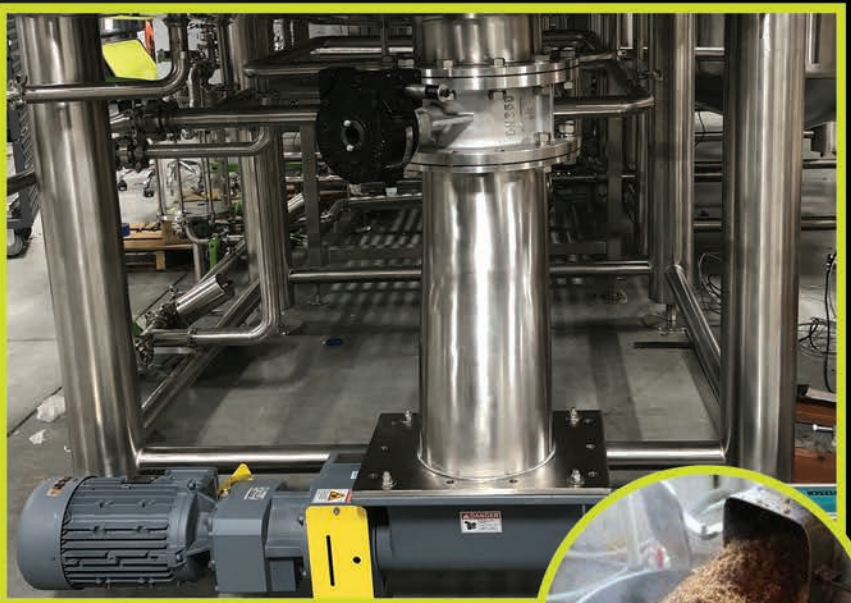
## GRIST MILLS

Alpha offers complete grain handling solutions including Meridian silos and grist mills. Our mills are dust tight and designed with efficiency, consistency and safety in mind.



## GRIST HOPPERS/AUGERS

Alpha stainless-steel grist hoppers are constructed with optimal grain flow and ease of integration in mind. Each system can be suspended, tank mounted, or floor standing. Custom sizes can be ordered. Alpha supplies flex auger systems and chain disk augers for optimal grain conveyance.



# KEG WASHERS & CIP TROLLEYS

Dirty cooperage is no match for the Alpha Wash Dog series of keg washers and fillers. No ullage will get past these highly trained servants. The Wash Dogs come in full auto, semi-auto and manual configurations to fit any budget. The dogs do not discriminate, they will clean you, or fill you whether you are a 1/6 barrel, 1/4 barrel, or 1/2 barrel keg.

The Wash Dog family of keg washers and fillers range in capacity from 15 to 40 kegs per hour. Though feared by soiled kegs, the Wash Dogs are user friendly and lead the pack with the following models available:



**WASH DOG WA-30**  
Full Auto Keg Washer



**WASH DOG JR SA-30**  
Semi Auto Keg Washer



**CIP TROLLEY**

# CHILLERS & BOILERS

## ALPHA SUPPLIES CHILLERS RANGING FROM 1.5 TO 150 HORSEPOWER

G&D Chillers can be found in Many of the leading breweries, wineries, distilleries, and industrial manufacturers in the USA and around the world. Our chillers are on the cutting edge of energy efficiency, automation and reliability.

Our in-house engineers combined with G&D's decades of expertise will design your cooling system and process piping with careful consideration to current and future capacity, as well as environmental and structural factors specific to your operation.

- MODULAR DESIGNS FOR EXPANSION
- MULTIPLE COMPRESSORS FOR REDUNDANCY
- ABILITY TO CUSTOMIZE ANY UNIT
- 24/7 SERVICE



## ALPHA PROVIDES FIRST CLASS COMMERCIAL STEAM BOILERS MADE IN U.S.A. BY RITE BOILERS

As members of the Brewers Association, Rite Boilers design efficient and reliable boiler systems for the craft brewing industry. Their dedicated representatives throughout the United States and Canada offer strong local support while their in-house tech service hot line is ready to answer any questions you might have.

Together we go the extra mile in assisting with designing and sizing your steam piping, feed water and condensate return systems and much more.



# CANNING SYSTEMS

## WEAPONS OF MASS DISTRIBUTION

### ALPHA BEER CANNON

AN ARSENAL OF BEVERAGE CANNING SOLUTIONS



### EXPANDABLE

50 to 100 Cans Per Min

The Beer Cannon On Your Front Line  
= Profit on Your Bottom Line





## FILLER

- **Dual Lane Design** - Alpha's unique dual lane design provides incredibly low dissolved oxygen levels, smaller footprint and expandability and redundancy.
- **Double Barrel Filler** - The Double barrel fill nozzle feature places two fill tubes into each can. This allows faster filling with less space, less energy and fewer moving parts.
- **SmartFill Servo** - The vertical motion of the filler is controlled by servo motor. Precision, programmable movement means size change with the push of a button, good foam control, no compressed air, low energy, and no maintenance.



## LID APPLICATOR

The dual lane lid applicator provides easy, 4 bolt size change and fine position adjustment on two axis. Alpha's unique spring tension lid release bar eliminates the bouncing rollers of yesteryear.

## LID MAGAZINE "THE REVOLVER"

The Revolver, high capacity lid magazine leaves all others wanting. When the two active chambers empty, simply twist the magazine 90 degrees and open the slide gates to release lids. When empty, simply lift and replace with the 2nd magazine (included).

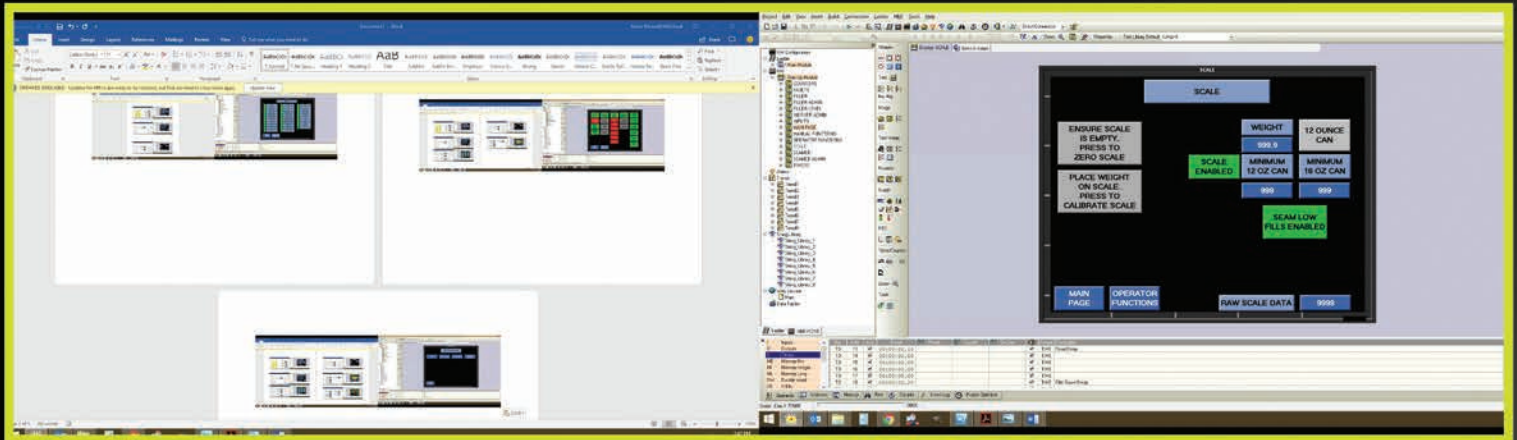


## RINSE/DRY STATION

Alpha employs burst rinse and dry technology to wash and dry only the cans and not the space between them helping the Beer Cannon to be perhaps the most energy efficient canning line of its kind.

# LOAD CELL CAN WEIGH STATION

The modular check weigh station on the Beer Cannon weighs each can accurately and can be used on other brands of canning line. The Operator sets the low fill threshold and any low fills detected are rejected automatically. The check weigh station can also be used to optimize fill level to reduce over-fill and maximize profits.



## SEAMER

Seam operation 1 and 2 are controlled by a cam driven by servo motor making precise seam adjustments within a thousandth of an inch possible at the push of a button.

## INDEXER

Our servo driven feed screw (indexer) pushes cans through the seamer over a stationary Delrin plate. This smooth method of travel increases accuracy of can positioning and seamer reliability.

## REJECT STATION

The automatic reject station after the can weigh station removes low fills, or cans missing lids. This feature reduces loss and prevents substandard product from hitting the shelf.



# THE ALPHA ARMADA

	BC 25 COMPASS	BEER CANNON 50	BEER CANNON 100
3 Head Double Barrel Filler	✓		
6 Head Double Barrel Filler		✓	
12 Head Double Barrel Filler			✓
"Revolver" Lid Magazine	✓	✓	✓
Lick Pick	✓	✓	✓
Servo Seamer	✓	✓	✓
Can Rinse & Dry Station	✓	✓	✓
Load Cell Weigh Station	Optional	✓	✓
Auto Reject Station	Optional	✓	✓

## ANCILLARY EQUIPMENT OPTIONS

- "Canapult" Manual Depallitizing System • "Canhusker" Automated Depallitizer
- Twist Rinsers • Date Coding • Labelling Systems (Pressure Sensitive & Heat Shrink)
- "Mini Gun" Automated Can Carrier Applicator • Pack-Off Conveyers/Tables

“

”

"We love our BC35! It's smart, efficient, and intuitive while still being low-frills and cost-conscious. We couldn't be happier with it!"  
**- James Rogalsky Old Bakery Beer Company**

"I can happily recommend the Alpha line. We have used the Alpha line for 10 months. Our's is set up for 16oz cans and we run 32 cpm at 2.8 volumes of CO2 and our total DO levels always in the teens. We never see missed lids unless operator error, or a bad lid. The can weighing feature is nice, but we rarely see low fills, even during startup. Alpha has incredible customer service and any time I need something I can get someone on the phone. I found the price point and Alpha's flexibility to be outstanding. Feel free to call me if you want to talk with a customer."

**- Weedy Weidenthal, Brewmaster Tombstone Brewing Co. World Brewing Academy, Class of 2014**

We purchased a canning line from these guys recently as an addition to our brewhouse. Both Matt and Jon with awesome to work with - hit all deadlines during production and even saved the day by driving the canning line out to Denver personally to help us stay on schedule. 100% top notch guys through communication, service and product. Will definitely be using them for further needs down the line and proud to use their equipment.

**- Tony DeLellis Tattered Flag Brewing Company**

# DEPALLETIZERS

## THE “CANHUSKER”

Alpha Brewing Operations is an innovative automatic can depalletizer designed and built by folks who know canning. There is no better imbalance of price versus quality & features in the industry. The imbalance known as VALUE!

The value of the Canhusker can be seen in its robust stainless steel and aluminum construction. The Canhusker twist rinser travels back across the space already consumed by the machine itself saving up to 10 feet of precious floor space. The twist rinser also features adjustable polymer rods providing smooth, silent travel of cans and rod adjustability with the turn of a nut.

The Canhusker features easy loading of pallets with a pallet jack. It is the only depalletizer in the industry to use a servo motor for lateral sweeping of cans. This means zero maintenance, low energy, smooth, programmable movement and adjustable distance and timing with the push of a button.

Finally, the stainless sheet metal tier sheet catch provides a more complete, sleek look to the machine, not to mention the LED ground effects. You want your brewery to look as cool as it operates, so why shouldn't it?

The Canhusker. Built by Champions. Used by Champions.



## THE “CANAPULT” MANUAL DEPALLETIZER

The Canapult is a simple, affordable entry level depalletizer for the start-up canner. After pulling a layer of cans onto the stainless-steel table, it's a matter of turning a lever and the “Canapult” does the rest, freeing up your operator to attend to other downstream packaging duties.

# ALPHA "MINI GUN" PACK TECH APPLICATOR

The Alpha Mini-gun is the most quiet, compact, affordable, energy efficient, user friendliest bad a\*\* of a 4 - 6 pack carrier applicator in the canning industry.

- MAXIMUM THROUGHPUT OF 80 CANS/MINUTE (6 PACK)
- SMALLEST FOOTPRINT IN THE INDUSTRY
- CAN BE INTEGRATED INTO VIRTUALLY ANY EXISTING CANNING OPERATION
- INNOVATIVE CAM OPERATED PRESS MECHANISM
- PNEUMATIC SWEEP ASSEMBLY
- 110V, SINGLE PHASE 1 FULL LOAD AMPS MINI-GUN APPLICATOR
- 110V, SINGLE PHASE 6 FULL LOAD AMPS MINI-GUN CONVEYOR
- COMPRESSED AIR LESS THAN 3 CU. FT. PER MINUTE AT 90 PSI

## TESTIMONIAL:

*"Just wanted to thank you and your team for getting our Mini Gun set up. It's turned our 3-man Alpha canning line into a single man operation. We are also able to put in longer runs as my guys are not complaining about their hands! Can't wait to see what else you guys come up with! Thanks"*

**- John Murman Glacial Till Vineyard**

Palmyra, NE

Gold Medal Winner 2018 US Open Cider Championship



# LABELERS & DATE CODERS

Alpha Brewing Operations supplies a variety of labeler options for covering up your cans. Our most popular pressure sensitive full wrap around labelers are the PL-501 and ELF-50 from Pack Leader. We offer a full line of heat shrink sleeve labelers and heat tunnels. PL labelers are unsurpassed in ease of use and maintenance, longevity and efficiency. When you want people to admire your cans, you have one source for labeling equipment.

## OUR VIDEOJET DATE CODERS OFFER SPEED WITHOUT COMPROMISING QUALITY:

- IDEAL SOLUTION FOR A RANGE OF SLOW TO MODERATE SPEED APPLICATIONS
- STORE UP TO 100 COMPLEX MESSAGES FOR EASY RECALL.
- SMALL AND PORTABLE, THE 1220 IS EASILY MOVED FROM LINE TO LINE WITH MINIMAL CONNECTIONS

## ENGINEERED TO KEEP YOUR LINE RUNNING :

- VIDEOJET'S ADVANCED CORE TECHNOLOGY INCLUDES ALL INK SYSTEM FILTERS AND COMMON WEAR PARTS
- INTERVALS OF UP TO 9,000 HOURS BETWEEN PREVENTATIVE MAINTENANCE
- AUTO CLEANING PRINTHEAD FOR FAST START-UPS, EVEN AFTER EXTENDED SHUTDOWNS
- OPTIONAL INTERNAL AIR PUMP ELIMINATES NEED FOR EXTERNAL AIR, MINIMIZING POTENTIAL FOR CONTAMINANTS TO ENTER THE INK STREAM

## NO MESS, NO WASTE FLUID DELIVERY:

- ADVANCED FLUID MANAGEMENT REDUCES MAKEUP CONSUMPTION TO AS LOW AS 2.4 ML/HR
- SMART CARTRIDGE™ FLUID DELIVERY SYSTEM TO VIRTUALLY ELIMINATE SPILLS AND HELP ENSURE THE CORRECT FLUIDS ARE BEING USED



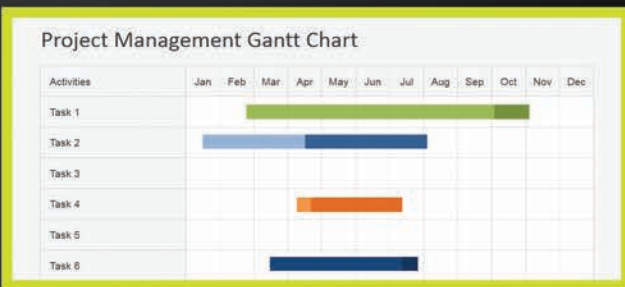
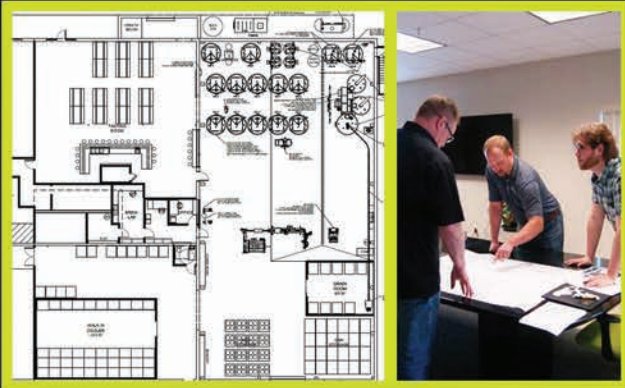
# SERVICES

## SALES

It doesn't begin and end with a quote. "Sales" is a process of consultation with the objective of designing an operation that optimally fits the three B's; Budget, Building and Brewing requirements. Throughout the sales process your scope of supply will likely evolve and we roll with the changes

## PROJECT MANAGEMENT

A successful project depends on; timely and competent execution of equipment layouts and utility schematics; equipment procurement, integration and testing; accurate logistics and documentation and constant communication and project updates. Our depth of experience in domestic and international project management specific to beverage packaging gives our customers a tremendous advantage. Exceptional manufacturing lead times and adherence to project schedules are a hallmark of Alpha Brewing Operations



## COMMISSIONING AND TRAINING

Once your equipment arrives and is set into place, an Alpha field technician(s) will arrive to commence with equipment commissioning and training. Alpha customers receive our thoroughly written operator manuals and will trek through each function and feature with our technician until comfortable in the driver's seat.

## ONGOING SUPPORT

If exceeding expectations is the aim then our team of engineers and technicians are like service snipers. You will reach an Alpha representative virtually any time. Calls and emails are returned with immediacy. We overstock spare parts from actuators to valves (couldn't come up with a component starting with Z) and everything in between.

**B.Y.O.B.  
BUILD YOUR OWN  
BREWERY**



Co-Founders Matt Rennerfeldt & Jon Marco



5401 Alvo Rd. Lincoln, Ne 68514 || 402-474-BREW || [www.alphabrewops.com](http://www.alphabrewops.com)

FOR ALL SALES ENQUIRIES

+61 3 9487 1150 | [info@fbpropak.com](mailto:info@fbpropak.com) | [fbpropak.com](http://fbpropak.com)

**FB\*PROPAK**

Supplying, installing & engineering breweries, packaging & canning lines since 1968