

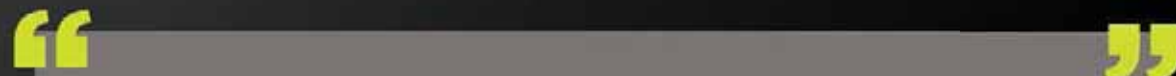


THE ALPHA ARMADA

	BC 24 "RECON"	BC 42 "LAUNCH"	BC42 "STRIKE"	BC 72 "INVASION"
4 Head Single Barrel Filler	✓			
4 Head Double Barrel Filler		✓	✓	
8 Head Double Barrel Filler				✓
"Revolver" Lid Magazine	✓	✓	✓	✓
Lid Pick	✓	✓	✓	✓
Seamer	✓	✓	✓	✓
Load Cell Weigh Station			✓	✓
Auto Reject Station			✓	✓
2nd Conveyor w/ Rinser & Dryer		✓	✓	✓

ANCILLARY EQUIPMENT OPTIONS

- "Canapult" Manual Depallitizing System
- "Canhusker" Automated Depallitizer
- Twist Rinsers
- Date Coding
- Labelling Systems (Pressure Sensitive & Heat Shrink)
- "Mini Gun" Automated Can Carrier Applicator
- Pack-Off Conveyers/Tables



"We love our BC35! It's smart, efficient, and intuitive while still being low-frills and cost-conscious. We couldn't be happier with it!"
- James Bogalsky Old Bakery Beer Company

"I can happily recommend the Alpha line. We have used the Alpha line for 10 months. Our's is set up for 16oz cans and we run 32 cpm at 2.8 volumes of CO2 and our total DO levels always in the teens. We never see missed lids unless operator error, or a bad lid. The can weighing feature is nice, but we rarely see low fills, even during startup. Alpha has incredible customer service and any time I need something I can get someone on the phone. I found the price point and Alpha's flexibility to be outstanding. Feel free to call me if you want to talk with a customer."
- Weedy Weidenthal, Brewmaster Tombstone Brewing Co. World Brewing Academy Class of 2014

We purchased a canning line from these guys recently as an addition to our brewhouse. Both Matt and Jon with awesome to work with - hit all deadlines during production and even saved the day by driving the canning line out to Denver personally to help us stay on schedule. 100% top notch guys through communication, service and product. Will definitely be using them for further needs down the line and proud to use their equipment.
- Tony DeLellis Tattered Flag Brewing Company

CANNING SYSTEMS

WEAPONS OF MASS DISTRIBUTION

ALPHA BEER CANNON

AN ARSENAL OF BEVERAGE CANNING SOLUTIONS



EXPANDABLE
 24 TO 42 TO 80 Cans Per Min
 The Beer Cannon On Your Front Line
 = Profit on Your Bottom Line

FOR ALL SALES ENQUIRIES
 +61 3 9487 1150 | info@fbpropak.com | fbpropak.com

FB*PROPAK
 Supplying, installing & engineering breweries, packaging & canning lines since 1968



FILLER

- **Dual Lane Design** - Alpha's unique dual lane design provides incredibly low dissolved oxygen levels, smaller footprint and expandability and redundancy.
- **Double Barrel Filler** - The Double barrel fill nozzle feature places two fill tubes into each can. This allows faster filling with less space, less energy and fewer moving parts.
- **SmartFill Servo** - The vertical motion of the filler is controlled by servo motor. Precision, programmable movement means size change with the push of a button, good foam control, no compressed air, low energy, and no maintenance.



LID APPLICATOR

The dual lane lid applicator provides easy, 4 bolt size change and fine position adjustment on two axis. Alpha's unique spring tension lid release bar eliminates the bouncing rollers of yesteryear.

LID MAGAZINE "THE REVOLVER"

The Revolver, high capacity lid magazine leaves all others wanting. When the two active chambers empty, simply twist the magazine 90 degrees and open the slide gates to release lids. When empty, simply lift and replace with the 2nd magazine (included).

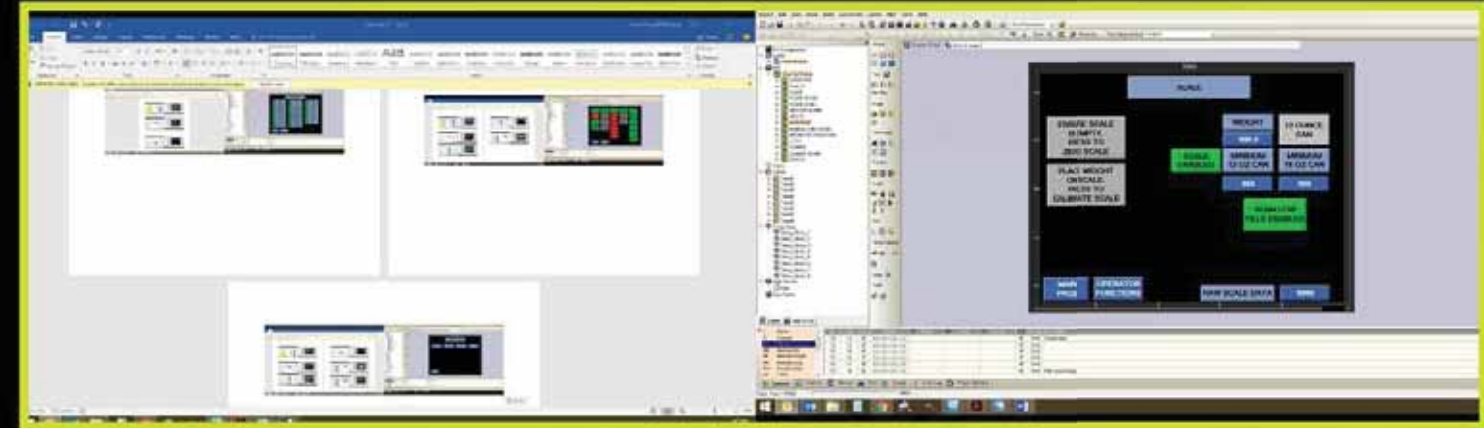


RINSE/DRY STATION W/ 2ND CONVEYER

Alpha employs burst rinse and dry technology to wash and dry only the cans and not the space between them helping the Beer Cannon to be perhaps the most energy efficient canning line of its kind.

LOAD CELL CAN WEIGH STATION (PATENTED)

The check weigh station on the Beer Cannon weighs each can prior to seaming. Operator chooses to seam, or not seam any low fills detected. Low fills are rejected automatically. Load cell also allows prevention of over fill to maximize profit!



SEAMER

Seam operation 1 and 2 are controlled by a cam driven by servo motor making precise seam adjustments within a thousandth of an inch possible at the push of a button.

INDEXER

Our indexer wheel is also servo driven and provides fast, yet smooth can transition to the load cell, the seamer and back onto the conveyor.

REJECT STATION

The automatic reject arm after the seamer removes low fills, or cans missing lids. This feature reduces loss and prevents substandard product from hitting the shelf.



SEAMER/INDEXER



REJECT STATION

FOR ALL SALES ENQUIRIES

+61 3 9487 1150 | info@fbpropak.com | fbpropak.com

FB*PROPAK
Supplying, installing & engineering breweries, packaging & canning lines since 1968