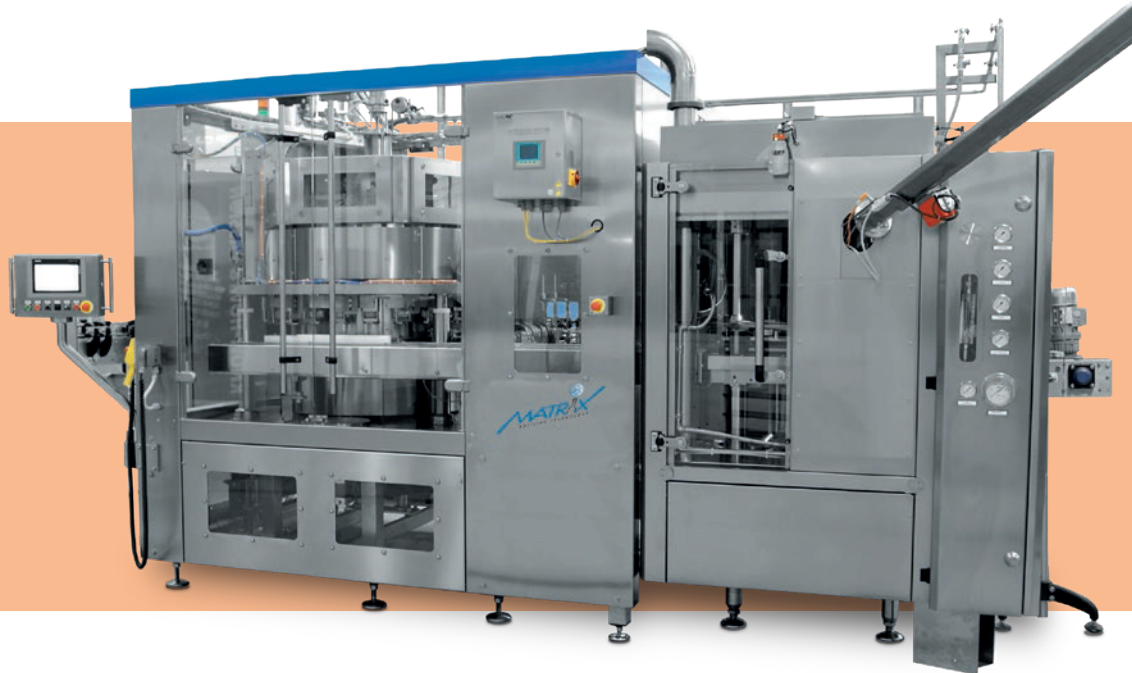




TECNA ISO-C FM

FILLING SYSTEM FOR BEVERAGES IN CANS



WORKING PRINCIPLE:
TECNA ISO-C FM is the isobaric, volumetric filling system with electropneumatically controlled valves that Matrix offers for filling in cans of carbonated or non carbonated drinks. The cans are placed under the filling valve without the traditional lifting system: it is the filling valve which, by lowering, guarantees a good sealing between can and filling valve. After the flushing phase with gas and next pressurization, the product valve opens and the

product flows along the can wall, thus allowing gentle and no foam filling. Once the quantity of product, set in the recipe, has been delivered, the magnetic flowmeter closes the valve. After a settling phase, the decompression valve reduces the pressure in the head space of the can (even in multiple stages) and, after lifting the valve, the container can be transferred to the seamer.

The versatile filling system allows, thanks to the recipes

memorable in the PLC, great flexibility in the changes due to different products or different levels of carbonation. The format changes are quick with reduced intervention times for different can formats and no part of the filling valve to be replaced in the case of different lids (200,202 or 206).

APPLICATIONS:
Cold filling in cans of carbonated beverages (Beer, CSD or Carbonated Water) and non carbonated beverages

(to be verified on the basis of the characteristics of the product necessary treatments). On request, as an option, the configuration is available for Hot Fill (85° C) with product recirculation, suitable for handling non-pasteurized still drinks like Ready To Drink or Energy Drinks.

OUTPUT RANGE:
Fillers from 8 to 90 valves that, depending on the type of product to be treated, could fill from 3.500 to 54.000 cans/hour.

TECNA ISO-C FM

FILLING SYSTEM FOR BEVERAGES IN CANS

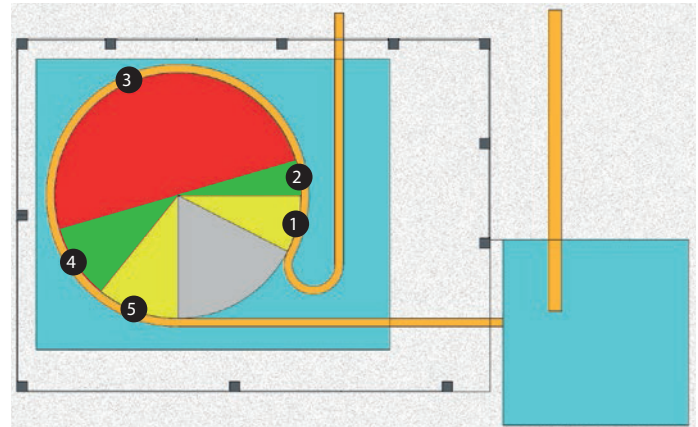
DESIGN FEATURES:

- Filling valves electro-pneumatically controlled
- Counterpressure filler working by volume (magnetic flowmeters, minimum conductivity 50 $\mu\text{S}/\text{cm}$)
- Automatic regulation of the fill level into the can through operator panel
- Hot and Cold filling possibility
- No springs in contact with product
- Filling phases managed by pneumatically driven PTFE membrane valves
- Automatic height adjustment of the filler tank
- Rotary distributor and all parts contacting product are made of stainless steel Aisi 304 or higher grade
- Each circuit cleanable in closed loop via CIP Dummy Cans
- Easy & intuitive touch-screen operation
- Filling Steps can be individually set and saved in the PLC for each product or can
- No changes, for the filling valve, for different lid (200,202 or 206)
- No vertical movement for the cans

- Hygienic filling conditions, no dynamic gaskets in contact with product, the valve is sealed by a simple PTFE membrane valves.
- Easy maintenance, the machine is well accessible so that all maintenance and service job can be done easily.
- Product Quality, low oxygen pick up by CO2 empty cans rinsing ensures high product quality during the shelf life

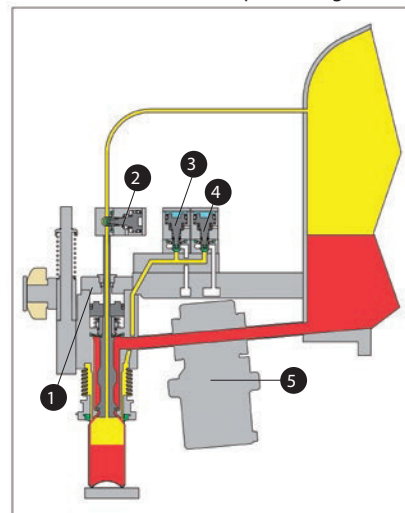
ADDITIONAL EQUIPMENT:

- ULTRACLEAN BASE FRAME Upon request, the base frame is available in ultraclean version, characterized by the double slope of the upper surface. This special design guarantees complete rapid draining of all product & water residue
- MODEM . Upon request, remote maintenance possibility;
- Low Oxygen Pick Up System by CO2 Rinsing into Empty Cans.
- Integration in block with Seamer.



FILLING SYSTEM FOR BEVERAGE CANS

- 1) Empty can flushing
- 2) Empty can pressurisation
- 3) Product filling
- 4) Product settle
- 5) Multiple sniffing



FILLING VALVE

- 1) Control for product valve
- 2) Pressurisation and return gas valve
- 3) Sniffing valve
- 4) CO2 flushing and cip return valve
- 5) Flowmeter

MODELS:

TECNA ISO-C FM

USER BENEFITS:

- Versatility, this filling system is suitable for a wide range of product from Water, CSD and Beer.
- Flexibility, change over of different product or CO2 contents is done quickly, easily and it is reproducible by working recipes stored on PLC.
- Quick change over times: short change over of different cans size.



All data are indicative.

proudly supplied by...

FB*PROPAK

food, beverage processing and packaging

FBPROPAK.COM

Contact us via: info@fbpropak.com or call (03) 9487 1150