

RINSING



FILLING



CAPPING



**NEW**

# **Modul** **BLOCK RFCI-LE**

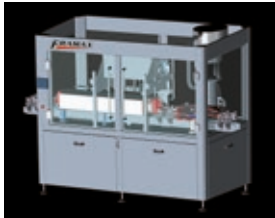
*Automatic electronic linear counter-pressure  
Modulblock® for beer, soft drinks, wine and  
other sparkling or flat products*

***Fully programmable  
filling phases***

**FRAMAX**

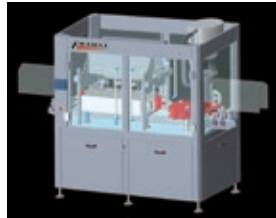
# Modul BLOCK RFCI-LE

**Automatic electronic linear counter-pressure Modulblock® for  
and other sparkling or flat products**



**MODULBLOCK  
RFCI-LE-04/04/1-C**

Includes 4 head rinser,  
4 valve isobaric filler and  
single head capper.



**MODULBLOCK  
FCI-LE-04/1-C**

Includes 4 valve isobaric filler  
and single head capper.

## Main features:

- Base structure of the machine completely covered in stainless steel AISI 304
- Easy access to every part of the machine for operations of cleaning or maintenance
- Capable of processing various bottle shapes and sizes
- Motorized selection and transfer of the bottles including bottle presence control (no-bottle/no-fill)
- Automatic filling cycle (electro-pneumatic)
- Electronic control of the different phases, with settings adjustable from the operator's panel

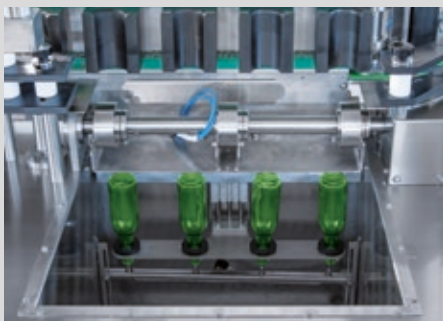
## Optional available on request:

- Fobber to reduce oxygen pickup
- Single or multiple air pre-evacuation
- Stainless steel dummy bottles for C.I.P

**Fully programmable  
filling phases**



## Machine composed of the following



- Automatic linear rinser with 4 positions, made in stainless steel AISI 304. (RFCI-LE model)
- Automatic 4 valve linear counter-pressure filling unit
- Product accumulation tank with electrical level probes
- Pneumatic lifting of the bottles with platforms equipped with bottles centering
- Filling nozzles in stainless steel, suitable for hot CIP
- Antifoam filling system with deflector to distribute the product evenly on the bottle walls
- Level adjustment by means of quick fit filling tubes

... beer, soft drinks, wine

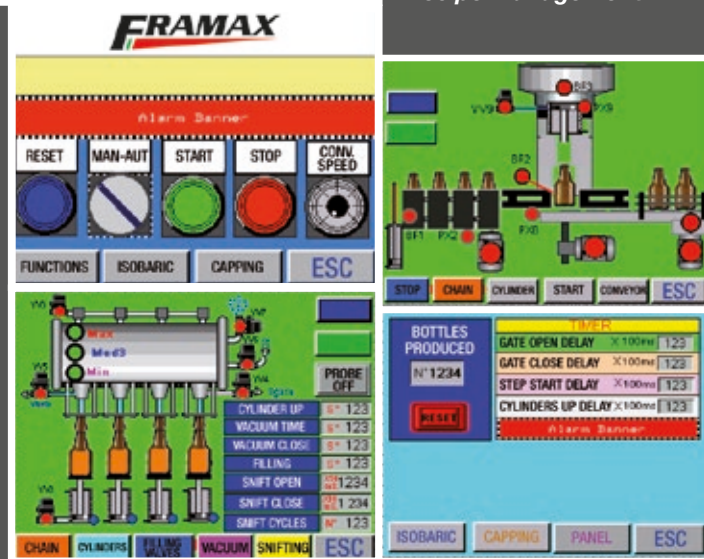


**Output:  
up to 600 bph**



**Touch screen  
control panel**

Each phase can be fully programmed by the operator to suit the product to be filled (Vacuum, CO2 injection, filling, snifting). Multiple recipe management.



## Capper details

- Automatic single head capper unit for crown caps or on request other types of closures
- Automatic caps dispensing hopper made in stainless steel
- Pneumatic bottle lifting
- Middle star and bottle guides in polyethylene
- Safety microswitch on the middle star for bottle jam detection
- Adjustable height for different bottle sizes





The data are approximate, not binding  
campbelladv.com 66916



For additional information visit: [www.framax.com](http://www.framax.com)



FRAMAX srl - Via Marlianese, 31  
51030 Serravalle Pistoiese (PT) Italy  
Ph./Fax +39 0573 51435 - Fax +39 0573 079907  
email: [info@framax.com](mailto:info@framax.com)